

Expert CTLs Ensure Quality Endpoints at Worldwide Clinical Trials

Therapeutically-aligned clinical trial liaisons (CTLs) are much more than “recruitment ambassadors” for individual studies but rather serve as experts in their therapeutic areas and as clinical trial specialists. Acting as strategic intermediaries between multiple key stakeholders within and across trials, CTLs ensure smooth communication and coordination. This infographic explores how CTLs facilitate the conduct of a clinical trial to enhance rigor, streamline operations, and contribute to the success and integrity of the clinical trial.

Understanding the Role

When utilized correctly, therapeutically-specialized CTLs provide a suite of strategic advantages to benefit a study, including:

- Improving site identification and selection using knowledge of site capabilities and expected protocol challenges, engaging potential sites or preparing research-naïve clinicians for clinical studies.
- Providing scientific and operational input during protocol development, leveraging their understanding of clinical trial methodologies, regulatory feedback, and innovative designs.
- Cultivating deeper site relationships beyond a single trial, acting as a strategic site relationship manager and consistent contact point.
- Facilitating patient recruitment through knowledge of local standards of care and patient treatment journeys in specific areas and regions.
- Collecting and integrating feedback and insights from multiple studies in a therapeutic area.
- Improving study planning with a comprehensive understanding of the competitive clinical trial landscape.
- Identifying site challenges and serving as problem solvers.
- Proactively managing site performance issues to maintain study timelines and quality.
- Enhancing project team and CRA readiness through better protocol training.
- Strengthening collaboration and dialogue among trial management teams.

CTLs Are

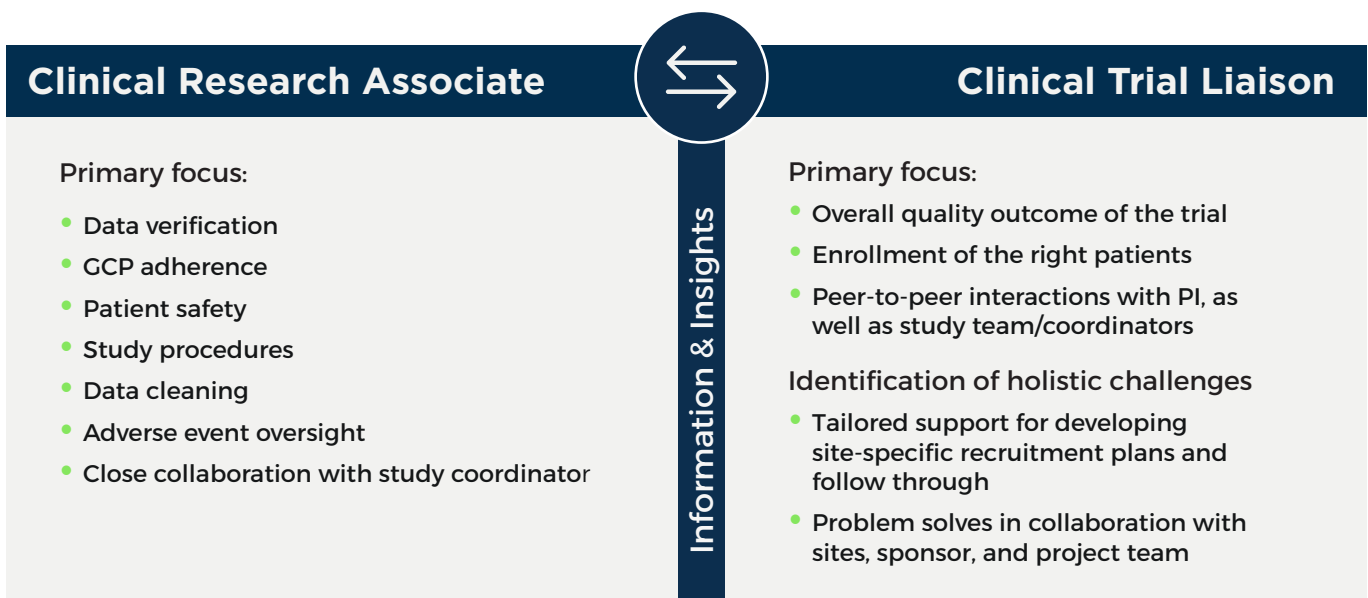


The optimal CTL is considered an expert in their therapeutic area and has:

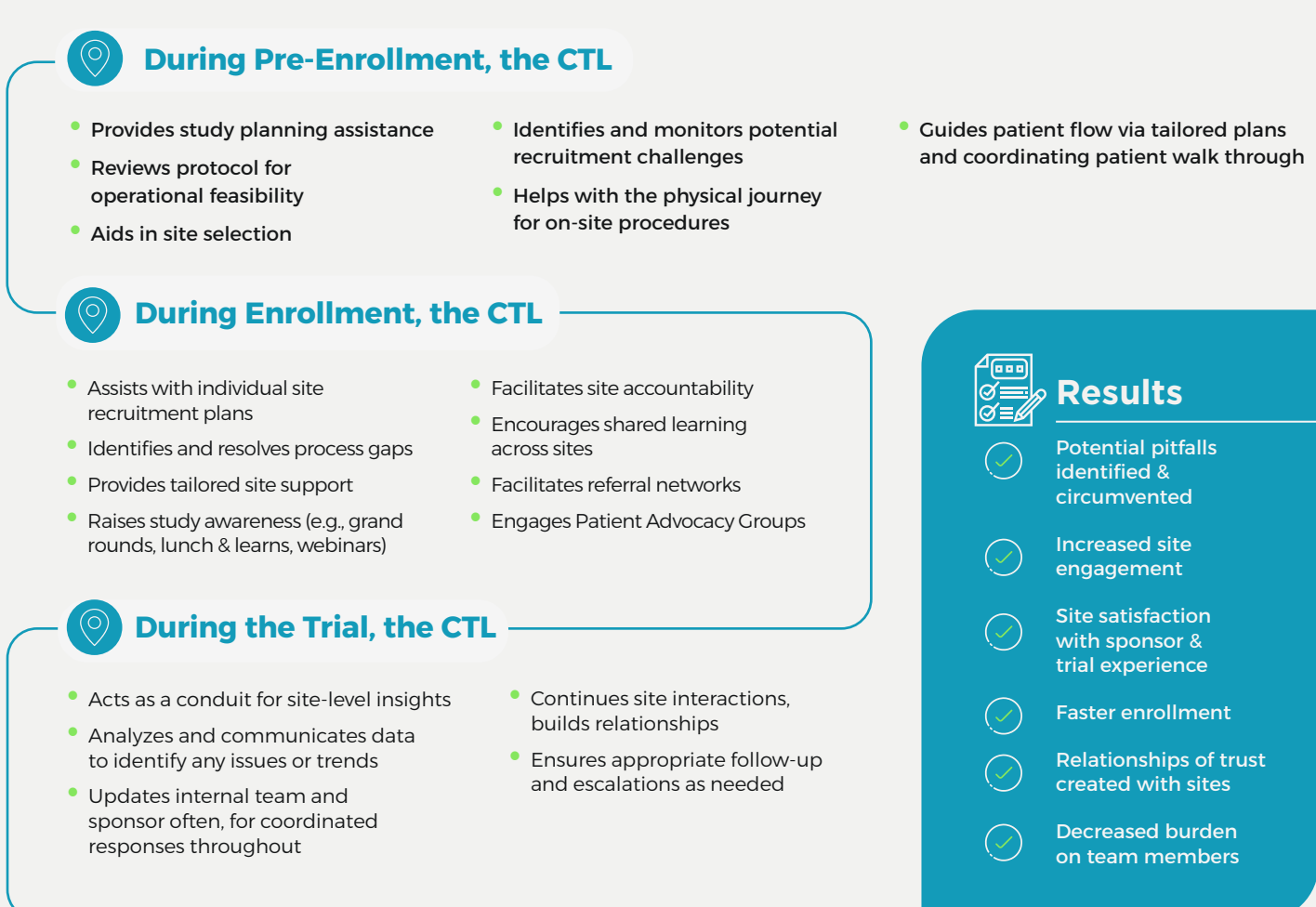
- An advanced degree, such as PharmD, MD, or PhD
- Expertise on current literature
- A deep understanding of clinical trial operations
- Experience with thought leader engagement and peer-to-peer interactions

They must work well independently, with cross-functional groups, and collaborate with the project team, including partnering with clinical research associates (CRAs).

The CTL – CRA Collaboration



CTL Support Throughout the Trial



CTLs Help Ensure Successful Clinical Trials

- Ensuring the right CTL for a trial based on therapeutic expertise and strong site relationships is critical.
- Finding the right CTL begins by selecting the right CRO, who has ample experience with trials in the therapeutic area and a history of successful trial navigation.

Expert CTLs Help Ensure Rigorous Trials at Worldwide Clinical Trials

Worldwide’s Scientific Solutions group has systematically integrated functional services to enhance the enrollment of patients and quality of endpoints in clinical trials across therapeutic areas. Our Clinical Trial Liaisons are an integral part of those services and are dedicated to adherence to rigorous trial methods and enrollment of the **right** patients, ensuring our sponsors can proceed in a timely manner with confidence in their results.

Contact us today to set up a time to speak with our experts and discuss how our team can best serve your trial needs and position your trial’s success.